

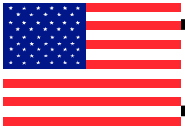
WESTERN MOTORS SERVICE * DC MOTORS from 6V thru 72V

PLACE
STAMP

WESTERN MOTORS SER. & MFG.
1211 23rd AVE.
ROCKFORD, IL. 61104 USA



PLACE MAILING
LABEL HERE



*** SPRING * 2018 * NEWSLETTER / FLYER ***



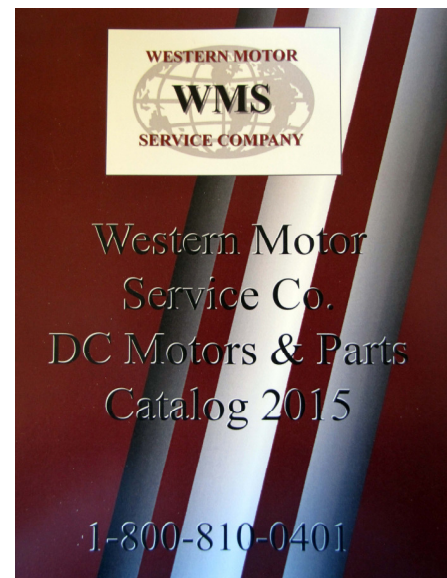
Free download via/internet the new complete 2015/16 motors and parts catalog with search options at www.wms1.com/catalog/ or email us at westernmotors@wms1.com

NEW ONLINE
MOTORS & PARTS CATALOG

Our new continuously updated on line Catalog has over 400 pages of DC motors and parts & diagrams

It is available at wms1.com/catalog/ and is a downloadable version of our new catalog which has fast & easy to use search options.

Call, email or go online for a free download!

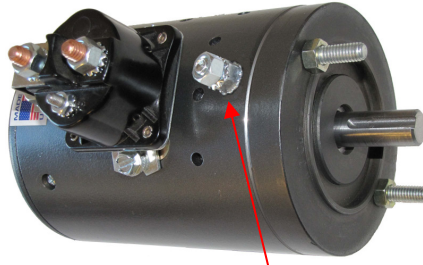


PHONE TOLL FREE 800-810-0401 or call 815-986-2214 <> FAX 815-986-2566

ITEMS IN STOCK ARE SHIPPED THE SAME DAY VIA. UPS IF ORDERED BY 3 PM (C.S.T.)

OPEN ACCOUNTS ARE AVAILABLE WITH APPROVED CREDIT <> WE ALSO SHIP ** COD / VISA / MC / DISCOVER / AMEX **

**** Notice**** We now offer shipping via USPS, SPEE-DEE Delivery Service & UPS **
Spee-Dee is next day to, IL / IA / WI & certain area's in MN & NE ask about shipping to your area.



Grd/Stud



"WMS" NUMBER, W-8999D

***12V* (CCW/DBB) SLOT SHAFT MOTOR
(2) FIELD COIL HIGH RPM MOTOR**

REPLACES NUMBERS,

46-2624, 2200478, 2200820, MUE-7006,
W8999, W8999D, 39200292, 39200380,
9130450064, 016579, 9130450081
913045008112, MUE-7004, MUE-6201,
9130450032, 2200849, 2200727

(APPLICATIONS)

**(ANTHONY EQUIPMENT,
HALDEX/BARNES
CONCENTRIC, WALTCO,
MTE HYDRAULICS)**

"WMS" PART NUMBER, W-7019

***12V* (CW/DBB) PRIMER PUMP
MOTOR COMPLETE WITH SWITCH**

REPLACES NUMBERS, 42234-00, W7019,
P8812, PA-812, PA812 & 10MT conversions

(APPLICATIONS)

**YARGER & DONNELL HYD., W.S. DARLEY
(Shaft is 1.5"/ 38.1mm long from the flat
area where the thru bolts are)**

**(RAISED RING DIA/ON DRIVE END IS 3")
(field frame on this unit is 5.5" long)**

"WMS" PART NUMBER W-6520

DBB PRIMER PUMP MOTOR W/SW.

***12V* CW MOTOR WITH .625" DIA. SHAFT**

REPLACES NUMBERS,

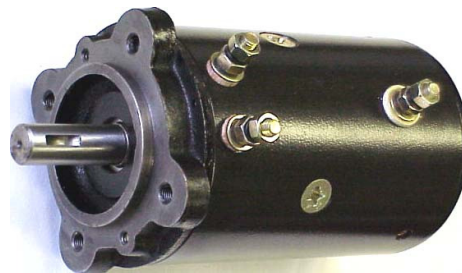
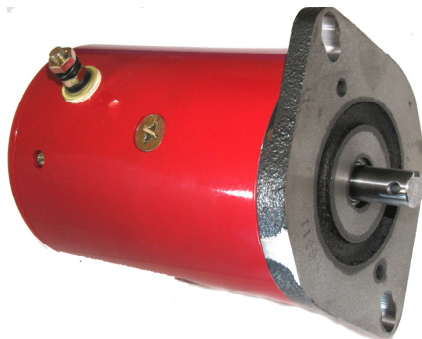
A-1558, W6520, MDT-6025, MDY-7020

(APPLICATIONS)

**(DARLEY, CHAMPION PUMPS)
(FIRE TRUCKS, ENERGY MFG. CO.)
(RAISED RING DIA/ON DRIVE END IS 3")**

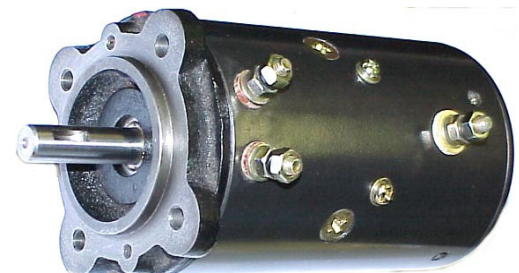
(Motor body length is 8")

**(Shaft is 1.5"/ 38.1mm long from the flat
area where the thru bolts are)**



Double Ball Bearing

Shaft Diameter is 0.750"/19.05mm



Double Ball Bearing

Shaft Diameter is 0.625"/15.87mm

"WMS" PART NUMBER, W-6311

***12V* (CW)**

Double Ball Bearing

HD Starter motor

REPLACES NUMBERS,

12896, 1108311, 1108313
140-064, 1109311, 1109474

(APPLICATIONS)

**(GRAVELY TRACTORS
AND RIDING MOWERS)**

"WMS" PART NUMBER W-9143

***12V* F&R 3 POST WINCH MOTOR**

REPLACES NUMBERS,

645041, W8933, MBJ-4403, MBJ-4405,
MBJ-4407, W-9133, MBJ-4410,
W-9133, MBJ-4412, MBJ-4415, 458001

(APPLICATIONS)

**(BRADEN INDUSTRIES, RAMSEY WINCH
CAM INDUSTRIES, HICKEY EQUIPMENT
DESERT DYNAMICS, TULSA WINCH
RAMSEY & PIERCE WINCH)**

**(MOTOR BODY LENGTH IS 7" LONG)
3.4 HP**

"WMS" PART NUMBER W-7627

***12V* F&R 3 POST WINCH MOTOR**

REPLACES NUMBERS,

RR-1093, W7627, MBJ-4406, W-8927,
W-8927D, 28755, 32K28755

(APPLICATIONS)

**(RUGER EQUIP., CRANES,
REDWOOD RELIANCE)
(RELIANCE TRAILER WINCH) (4.8 HP)
(TRACTOR / TRAILER CAR HAULING RIGS)**

**Motor body length is 8"/ 203.2mm long
Raised alignment ring
Diameter is 3"/ 76.20mm
Shaft length from the drive end frame
is 1.625"/ 41.27mm**



"WMS" PART NUMBER, W-6599

"OEM" *12V* (CW) (DBB)

PRIMER PUMP MOTOR W/SWITCH

REPLACES NUMBERS,

46-2605, 46-2155

200-0040-00, MCL-6225, MCL-6225A,

MCL-6228, MCL-6508T, MCL-6508,

W6599, MAY-4301, MAY-4301S

(APPLICATIONS)

(HALE PRIMER PUMPS)

(POWER WHEELS,PUREX,WATEROUS)

(FOR A MOTOR WITH THE PLASTIC

BODY SWITCH USE W-6559)



Grd/Stud

"WMS" PART NUMBER, W-6307

***12V* (CW) (DBB) (2 Field coils)**

PRIMER PUMP MOTOR W/GRD/STUD

"COMPLETE WITH SWITCH"

(SHAFT HAS KEY SLOT AND PIN HOLE

THRU .625" DIAMETER SHAFT)

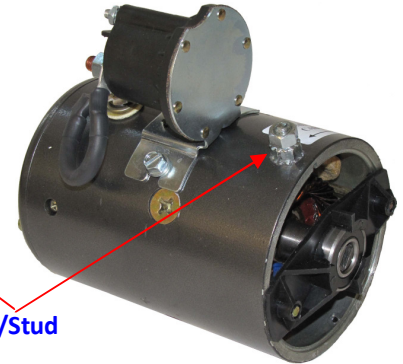
REPLACES NUMBERS,

W6307, MUE-6207,

MUE6207S, MUE-6307, MUE6307S

(APPLICATIONS) (HALE PRIMER PUMP)

(POWER WHEELS,PUREX, WATEROUS)



"WMS" PART NUMBER, W-6410

***12V* (CW) (DBB)**

PRIMER PUMP MOTOR W/GRD/STUD

"COMPLETE WITH SWITCH"

REPLACES NUMBERS, V3203, W-6210

MUE-6210, W6410, MUE-6210S, MUE-6310

(APPLICATIONS)

(WATEROUS COMPANY, WISCONSIN ENG.)

(MOTOR HAS A SLOT SHAFT ARMATURE

USE DRIVE END FRAME FROM OLD UNIT)

(MOTOR HAS A GROUND CABLE STUD)

(FOR 24V USE NUMBER W-6418)



"WMS" PART NUMBER, W-6563

"OEM" *12V* (CW) (DBB) PRIMER

PUMP MOTOR "COMPLETE W/SW"

(HAS RECESSED SLOT SHAFT ARMATURE)

REPLACES NUMBERS,

W6552, ESP-12, MCL6201, MUE-6215S,

200-0042-00-0, MCL-6201S

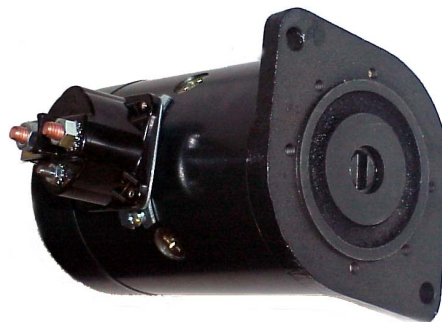
(APPLICATIONS)

(HALE PRIMER PUMPS) (2000 <> 2010—2016)

(RING DIAMETER ON DE IS 3.25"/ 82.55mm)

(Overall length of this "OEM/HD" motor is 8")

THIS IS THE LATEST STYLE 12V HALE MOTOR



"WMS" PART NUMBER, W-6553

"OEM" *12V* (CW) (DBB) PRIMER

PUMP MOTOR "COMPLETE W/SW"

(HAS RECESSED SLOT SHAFT ARMATURE)

REPLACES NUMBERS,

W6552, W-6519, ESP12, MCL6201, MUE-6215S

200-0042-00-0, ESP12, MCL-6201S

(APPLICATIONS)

(HALE PRIMER PUMPS) (2000 <> 2010—2015)

(RING DIAMETER ON DE IS 3.25"/ 82.55mm)

(Overall length of this "OEM / HD" motor is 8")



"WMS" PART NUMBER, W-6552

"OEM" *12V* (CW) (DBB) PRIMER

PUMP MOTOR "COMPLETE W/SW"

(HAS RECESSED SLOT SHAFT ARMATURE)

REPLACES NUMBERS,

W6552, W-6519, ESP12, MCL6201, MUE-6215S

200-0042-00-0, ESP12, MCL-6201S

(APPLICATIONS)

(HALE PRIMER PUMPS) (2000 <> 2010—2015)

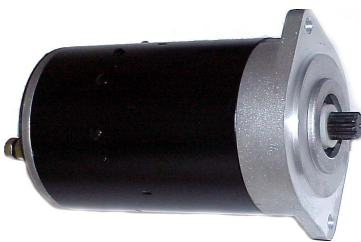
(RING DIAMETER ON DE IS 3.25"/ 82.55mm)

(Overall length of this "OEM / HD" motor is 8")

Motor has 1/4X20 thru bolts



ARMATURE SLOT SIZE
IS 1/4" / 0.256 / 6.50mm



“WMS” PART NUMBER, W-8031D

* 12V * (CCW) DBB (3") PERMANENT
MAGNET MOTOR FOR MONARCH AND
BUCHER EQUIPMENT (.8KW)

REPLACES NUMBERS,

W8031, M-2590112, 1330185,
4423720, 8110, W-8931, 14785, 17208,
50501, 56539, 82195, 2590100, 2590112

(APPLICATIONS)

(MONARCH & BUCHER PUMPS)
(LEVELERS FOR MOTOR HOMES)
(SIDE DOOR WHEELCHAIR LIFTS
FOR BUSES AND VANS ETC.)

“WMS” PART NUMBER, W-8046

12V*/DBB 2 POST 3" DIAMETER/PM
(9) SPLINE MOTOR (.8KW)

REPLACES NUMBERS,

W8046, AME1701, MF-4046, 11.216.187

(APPLICATIONS)

(FENNER FLUID POWER, PRIME-TRAK,
PRIME MOVER EQUIP. SPX)
(MOTOR HAS BALL BEARING FRAMES
AND A (9) SPLINE SHAFT.

“WMS” PART NUMBER, W-8055

12V * (2) POST SLOT
SHAFT MOTOR (.8KW)

REPLACES NUMBERS,

IM-0172, 11.212.147, W8055,
11.212.159, 11.212.167, MF-4042,

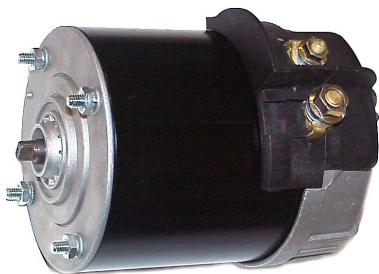
AME-1609, AME-1614

(APPLICATIONS)

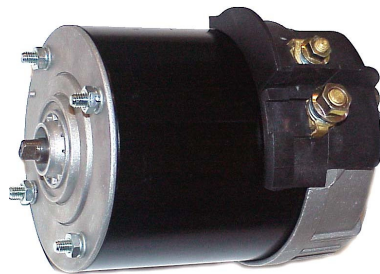
(FENNER FLUID POWER, PRIME-TRAK,
PRIME MOVER EQUIP.)

(ARMATURE SLOT IS .256"/6.50mm)

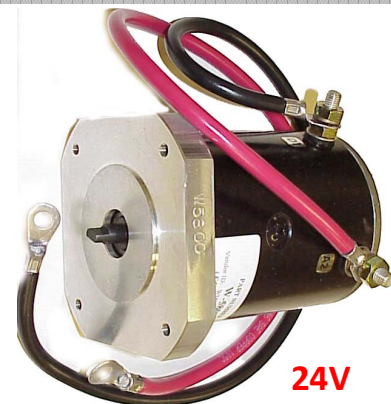
From the area where the mounting holes
are the shaft is 0.980"/ 24.90mm long



12V



24V



24V

12V “CCW” (TANG SHAFT MOTOR

“WMS” PART NUMBER, W-5258

REPLACES NUMBERS,

984801, 109511

(APPLICATIONS) (CROWN & HPI)

(Tang shaft is 10mm in diameter
and 4mm flat to flat)

Alignment ring dia. is 63.5mm (2.5")

(FOR A 24V MOTOR USE NUMBER W-5158)

24V “CCW” (TANG SHAFT MOTOR)

“WMS” PART NUMBER, W-5158

REPLACES NUMBERS, W5158,

0805158, 109512V, CR0805158,
183-430010, 183-430010V, CR-
0805158, 5158, B05158

(APPLICATIONS) (CROWN & HPI)

(Tang shaft is 10mm in diameter
& 4mm flat to flat)

Alignment ring dia. is 63.5mm (2.5")

(FOR A 12V MOTOR USE W-5258)

24V “CCW” TANG SHAFT MOTOR

“WMS” PART NUMBER W-5800

REPLACES NUMBERS,

W5800, 125-69, 126-59, 58012669,
12669, 58001-36069, 58001360-69,
5800126-69, 5800126

(APPLICATIONS)

(YALE HYDROPERFECT)

(DE alignment ring diameter is 2.50")

(6. mm mounting holes)

(hole to hole across is 3"/ 76.2mm

Tang shaft dia.9mm/3.81mm flat aera



***12V* (CCW) HD SLOT SHAFT MOTOR**

“WMS” PART NUMBER MMY6302

REPLACES NUMBERS,
430-20015, W8945D, W-8945D,
08082, 145007, 2200072, 25236A,
3260110, 547-0114, 70091739,
MMY4003, 46-4154, 39200398
MMY6101A, MMY6102B, 39200506

(APPLICATIONS)

(MONARCH HYDRAULICS, THIEMAN,
HALDEX BARNES, LEYMAN, WALTCO,
MAXON, MTE, CONCENTRIC)



“WMS” NUMBER, MUY6301

***12V* (F & R) MOTOR)**
Flat on each side is .375”, 9.54mm
(Shaft length is 1.55”, 37.47mm)
Shaft has 1/2” deep pin hole

REPLACES,
681217, 251283, W-8845N
MUE6214, 18402033, MUY6301S

(APPLICATIONS)

(RAMSEY WINCHES, REP8000X)

(Must use DE housing from original motor)



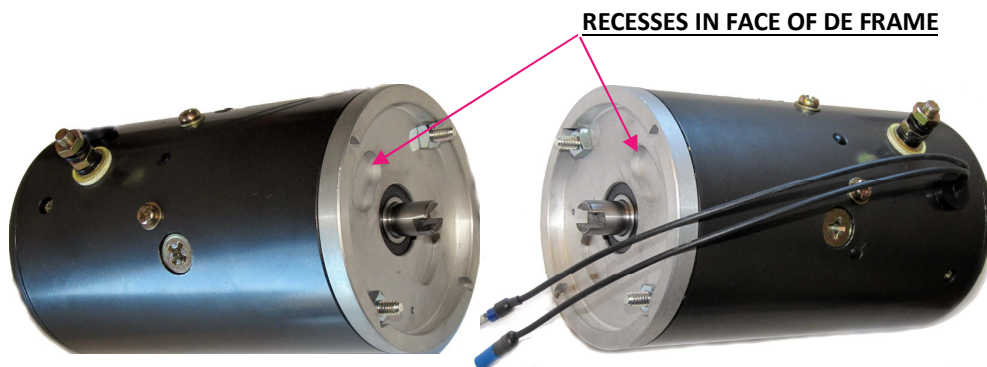
“WMS” NUMBER, MUP6301

***12V* CCW/DBB (1) POST
SLOT SHAFT MOTOR 2 FIELDS & 2
SHUNTS**

REPLACES NUMBERS,
W9293D, W-9293D
W-8993, W-9993, W-9293,
46-4166, MUP6201, MUP6301

(APPLICATIONS)

(BUCHER & MONARCH HYDRAULICS)



RECESSES IN FACE OF DE FRAME

“WMS” PART NUMBER, W-9305

***12V* CCW/DBB “HD”
SLOT SHAFT MOTOR *3HP***

REPLACES NUMBERS, MMY6305,
268337-01, W9305, 39200518, MMY6305S

(APPLICATIONS) MTE HYDRAULICS

The face of the DE frame has recesses

.256 slot shaft is 0.750”/19.05mm out
from the ball bearing race

(The switch holes are offset to the
“Right” of the terminal post)

“WMS” PART NUMBER, W-9305A

***12V* CCW/DBB “HD” SLOT SHAFT
MOTOR W/OLP *3HP***

REPLACES NUMBERS, MMY6305A,
268011-01, W9305A, 39200538,
W-8239A, MMY6305AS

(APPLICATIONS) MTE HYDRAULICS

The face of the DE frame has recesses

.256 slot shaft is 0.750”/19.05mm out
from the ball bearing race

(The switch holes are offset to the
“Right” of the terminal post)



“WMS” PART NUMBER, W-8238A

***12V* CCW/DBB “HD” SLOT SHAFT
MOTOR W/OLP *3HP***

REPLACES NUMBERS,
70469430, 39200547
S202*5287, K639629, S202-5287

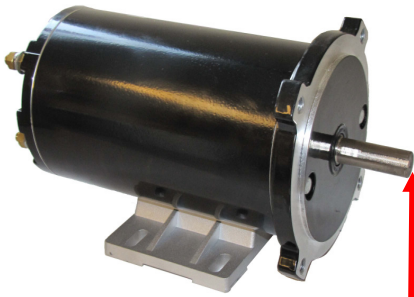
(APPLICATIONS)

MTE HYDRAULICS, WALTCO

**The face of the DE frame “does not”
have recesses like the W-8239A**

.256 slot shaft is 0.750”/19.05mm out
from the ball bearing race

Motors have 56C drive end frame & low base mounts



“WMS” PART NUMBER,
W-98981

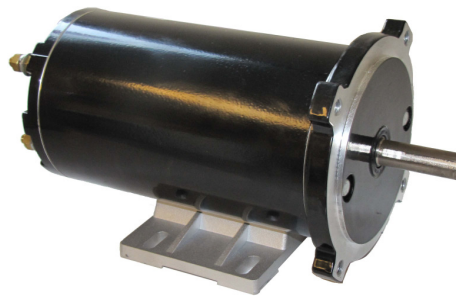
***12V* (CW/CCW) 1HP (4.5” DIA.)
DBB “PM” 5/8” SHAFT MOTOR
WITH BAR KEY SLOT & **THREADED HOLE****

REPLACES NUMBERS,
**W4BC04224, 4BC-04224, 4BC0224
4BC-4224, 4BC4224**

(APPLICATIONS)
(AUGERS, Mobil Equipment)
(1HP) (1800 RPM)
(FULL LOAD AMPS = 80)

(OVERALL LENGTH OF MOTOR IS 11.5”)
(SHAFT IS 2” LONG WITH SEAL AT DE)

(Hole in end of shaft is 5/16X18 X 7/8” deep)



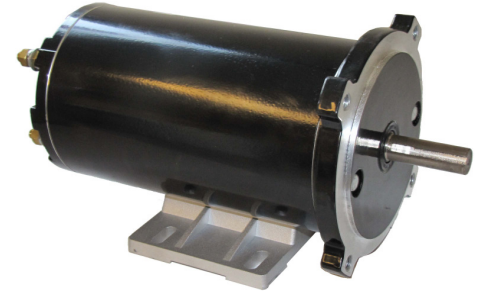
“WMS” PART NUMBER,
W-98982

***12V* (CW/CCW) 1/2HP (4.5” DIA.)
DBB “PM” 5/8” SHAFT MOTOR
WITH BAR KEY SLOT**

REPLACES NUMBERS,
**W4BB1367, 4BB-01367, BA-3614-2828-48
BA-36167065, 4648-9-48B, C42D17N22A**

(APPLICATIONS)
(MISC./ MOBIL EQUIPMENT)
MOTOR FOR AUGERS AND SPREADERS
(1/2HP) (1800 RPM)
(FULL LOAD AMPS = 40)

(OVERALL LENGTH OF MOTOR IS 8.5”)
(SHAFT IS 2” LONG WITH SEAL AT DE)



“WMS” PART NUMBER,
W-98982A

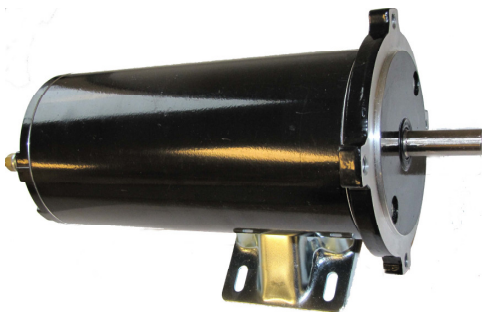
***12V* (CW/CCW) 1/2HP (4.5” DIA.)
DBB “PM” 5/8” SHAFT MOTOR
WITH BAR KEY SLOT AND **“OLP”****

REPLACES NUMBERS,
**W4BB1367, 4BB-01367, BA-3614
BA-36167065, 4648-9-48B, C42D17N22A**

(APPLICATIONS)
(MISC./ MOBIL EQUIPMENT)
(Motor has two wires out the CE for the OLP)
(1/2HP) (1800 RPM)
(FULL LOAD AMPS = 40)

(OVERALL LENGTH OF MOTOR IS 8.5”)
(SHAFT IS 2” LONG WITH SEAL AT DE)

Motors have 56C drive end frame & high base mounts



“WMS” PART NUMBER,
W-98986

***12V* (CW/CCW) 1HP (4.5” DIA.)
DBB “PM” 5/8” SHAFT MOTOR
WITH BAR KEY SLOT**

REPLACES NUMBERS,
**W4BC1602, 4BC-01602, 10867800,
108677.00, BA3630-4126-56C**

(APPLICATIONS)
(MISC./ MOBIL EQUIPMENT)
MOTOR FOR AUGERS AND SPREADERS
(1HP) (1800 RPM)
(FULL LOAD AMPS = 80)

(OVERALL LENGTH OF MOTOR IS 11.5”)
(SHAFT IS 2” LONG WITH SEAL AT DE)



“WMS” PART NUMBER,
W-98988

***12V* (CW/CCW) 1/2HP (4.5” DIA.)
DBB “PM” 5/8” SHAFT MOTOR
WITH BAR KEY SLOT**

REPLACES NUMBERS,
**C4D17NK6B, 108051, 120Z402H/H2, 50090
108046.00, BA3630-700066**

(APPLICATIONS)
(MISC./ MOBIL EQUIPMENT)
MOTOR FOR AUGERS AND SPREADERS
(1/2HP) (1800 RPM)
(FULL LOAD AMPS = 40)

(OVERALL LENGTH OF MOTOR IS 8.5”)
(SHAFT IS 2” LONG WITH SEAL AT DE)



“WMS” PART NUMBER,
W-98996

***12V* (CW/CCW) 1HP (4.5” DIA.)
DBB “PM” 5/8” SHAFT MOTOR
WITH BAR KEY SLOT**

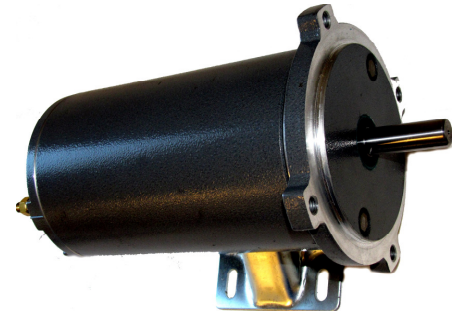
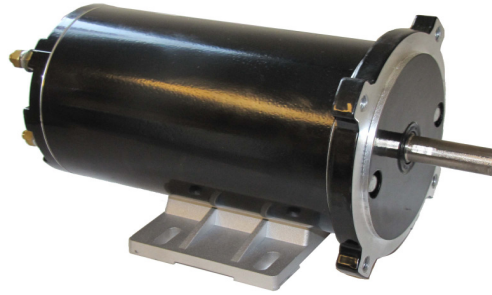
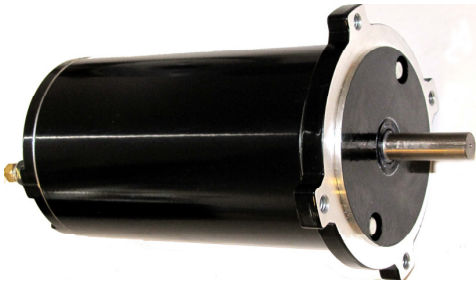
REPLACES NUMBERS,
**W4BC1602, 4BC-01602, 10867800,
108986.00, 108677.00, BA3630-4126-56C**

(APPLICATIONS)
(MISC./ MOBIL EQUIPMENT)
MOTOR FOR AUGERS AND SPREADERS
(1HP) (1800 RPM)
(FULL LOAD AMPS = 80)

(OVERALL LENGTH OF MOTOR IS 11.5”)
(SHAFT IS 2” LONG WITH SEAL AT DE)

56C DE frame & low base mount

56C DE frame & high base mount



**“WMS” PART NUMBER,
W-98983**

**“WMS” PART NUMBER,
W-98984**

**“WMS” PART NUMBER,
W-98985**

***12V* (CW/CCW) 1/2HP (4.5” DIA.)
DBB “PM” 5/8” SHAFT MOTOR
WITH BAR KEY SLOT**

***12V* (CW/CCW) 1HP (4.5” DIA.)
DBB “PM” 5/8” SHAFT MOTOR
WITH BAR KEY SLOT**

***12V* (CW/CCW) 1/2HP (4.5” DIA.)
DBB “PM” 5/8” SHAFT MOTOR
WITH BAR KEY SLOT (LEESON STYLE)**

REPLACES NUMBERS,

REPLACES NUMBERS,

REPLACES NUMBERS,

D-6872, SP-9500 , D6872

W4BC1368, 4BC-01368, 4BC01368

C4D17NK73, A900906, 108046.00, 108047.00,
4BB01601, 108046, 108047, 17737
C4D17NK6B, 108051, 120Z402H/H2, 50090

(APPLICATIONS)

(APPLICATIONS)

(APPLICATIONS)

MISC./ AUGER & SPREADER MOTORS
WITHOUT MOUNTING BASE

(MISC./ MOBIL EQUIPMENT)
MOTOR FOR AUGERS AND SPREADERS

(MISC./ MOBIL EQUIPMENT)

(1/2HP) (1800 RPM)
(FULL LOAD AMPS = 40)

(1HP) (1800 RPM)
(FULL LOAD AMPS = 80)

(1/2HP) (1800 RPM)
(FULL LOAD AMPS = 40)

(OVERALL LENGTH OF MOTOR IS 8.5”)
(SHAFT IS 2” LONG WITH SEAL AT DE)

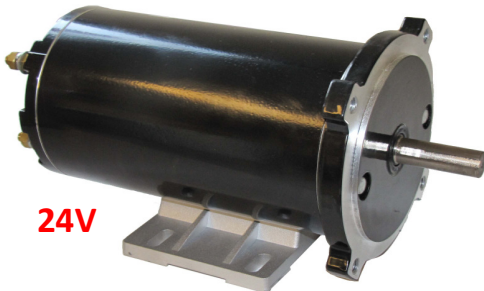
(OVERALL LENGTH OF MOTOR IS 11.5”)
(SHAFT IS 2” LONG WITH SEAL AT DE)

(OVERALL LENGTH OF MOTOR IS 8.5”)
(SHAFT IS 2” LONG WITH SEAL AT DE)

LEESON STYLE OF SCOTT MOTOR W4BB-1601

56C DE frame & low base mount

56C DE frame & high base mount



24V

24V

Popular Wisconsin engine starter

**“WMS” PART NUMBER,
W-98998**

**“WMS” PART NUMBER,
W-98999**

NEW *12V* (CCW) STARTING MOTOR

“WMS” NUMBER, MHA6102NR

REPLACES NUMBERS,

***24V* (CW/CCW) 1HP (4.5” DIA.)
DBB “PM” 5/8” SHAFT MOTOR
WITH BAR KEY SLOT**

***24V* (CW/CCW) 1HP (4.5” DIA.)
DBB “PM” 5/8” SHAFT MOTOR
WITH BAR KEY SLOT**

46-3597, MBG4141, 46-910, 46-2577,
5495, 46-911, MHA-6102, MHA6102,
MHA7021, 160-155, 04-1051, YA-61,
MHA-7021, 46-2577, MHA6102S, 46-911,
MBG-4141, 6513373, 69646C91, MHA-
6102S, 5494, 1107782, 0267266, 1109426,
160-155A

REPLACES NUMBERS,

REPLACES NUMBERS,

W4BB1427, 4BC-01428,
4BB01427, W4BC1428,

W4BB1604, 4BC-01605,
4BB1604, W4BC1605

(APPLICATIONS)

(APPLICATIONS)

(APPLICATIONS)

(MISC./ MOBIL EQUIPMENT)

(MISC./ MOBIL EQUIPMENT)

(TELEDYNE WISCONSIN, WISC/ENGINE)

MOTOR FOR AUGERS AND SPREADERS

MOTOR FOR AUGERS AND SPREADERS

(CCW ROTATION W/A 10 TOOTH GEAR)

(1HP) (1800 RPM)
(FULL LOAD AMPS = 80)

(1HP) (1800 RPM)
(FULL LOAD AMPS = 80)

(New starter motor)

(LENGTH OF MOTOR IS 11.75”)
(SHAFT IS 2” LONG)

(LENGTH OF MOTOR IS 11.75”)
(SHAFT IS 2” LONG)

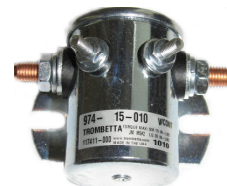
**** Top Quality Trombetta Switches" ****



WCS-96 Connector strap



WCS-95 Connector strap



***12V* (INSULATED GROUND)**

(4) POST SWITCH

REPLACES NUMBERS,
WS-133, 15-132, 15-133, 15-313, 15-316
SAS-4202, SAS-4213, SAS-5201A, SAS-5803

"WMS" PART # WS-133P

***12V* (CASE GROUND)**

(3) POST SWITCH

REPLACES NUMBERS,
WS-139, 15-139, 15-247, 15-345
SAS-4208, SAS-4220, SAW-4226, 97229

"WMS" PART # WS-139P

***24V* "INSULATED" GROUND**

(4) POST SWITCH

CONTINUOUS DUTY / FLAT BRACKET
REPLACES NUMBERS, 15-141, SAS-4401,
WS-141, 15-268, SAS-4410, 15-317, SAS-5403A

"WMS" PART # WS-141P



***12V* (INSULATED GROUND)**

(3) POST SWITCH WITH 0.275 MOUNT/SLOTS

REPLACES NUMBERS,
97819-000, 634-1211-212

(USE THE WCS-634 CONNECTOR)

"WMS" PART # WS-634



***12V* EXTENDED DUTY SWITCH
REP. 684-1261-212**

Switch has special bracket with 0.200
mount/slots that are approximately
1.25" forward from rear plate area.
(CURVED MOUNT W/ INS GROUND)

"WMS" PART # WS-637L



WCS-634 Connector strap



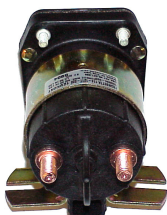
***12V* (INSULATED GROUND)**

(4) POST SWITCH WITH 0.275 MOUNT/SLOTS

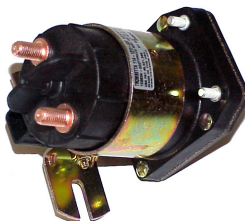
REPLACES NUMBERS,
WS-635, SBJ-6255

(USE THE WCS-634 CONNECTOR)

"WMS" PART # WS-638



NOW AVAILABLE
Made to handle heavy
current loads for the HD
4.5", 5" and 6" diameter
Prestolite, Ohio, Scott
and Leeson type motors



**C/D switches are
Continuous duty**



***12V* (HD C/D BEAR SWITCH)
(4) POST W/FLAT BRACKET)**

FOR A HD/BEAR SWITCH WITH A CURVED
BRACKET USE NUMBER WS-812C

"WMS" PART # WS-812F

***24V* (HD C/D BEAR SWITCH)
(4) POST W/FLAT BRACKET)**

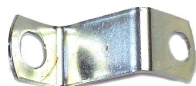
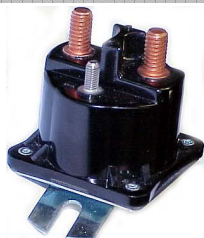
**(FOR A HD/BEAR SWITCH
WITH A CURVED BRACKET
USE NUMBER WS-824C)**

"WMS" PART # WS-824F

(C/D *12V* (5) POST SWITCH)

REPLACES, S-500, 440110, 15-301
15-341, 7-1051, 244101, 516-087, 15-338
SBD-4201, SBD-4201D, SBD-4201E

"WMS" PART # WS-341P



WCS-23 Connector strap



***12V* 4 POST INSULATED GROUND
SOLENOID SWITCH (Import)**

(MOUNT SLOTS ARE FOR A 1/4X20 SCREW)

REPLACES, SAZ-4201GC, SAZ4201ER, 15-483

**"WMS" PART NUMBER WS-483
(WIDE MOUNTING SLOTS 0.275)**

***12V* 3 POST METAL BASE GROUND
SOLENOID SWITCH (Import)**

(MOUNT SLOTS ARE FOR A 10X32 SCREW)

REPLACES NUMBERS, 15-544, SAZ-4201FY

**"WMS" PART NUMBER WS-544
(NARROW MOUNTING SLOTS 0.200)**



(C/D *12V* (6) POST SWITCH)

REPLACES NUMBERS,
WS-386, 200182, 70-311221-5, 15-386
WS-323, 08136, SO51188, SBD-4201A&G, 15-323

"WMS" PART # WS-386P

We also stock a variety of Mahle/Letrika, Ohio, Imperial, Hannay, Scott, Ametek Prestolite motors & parts